



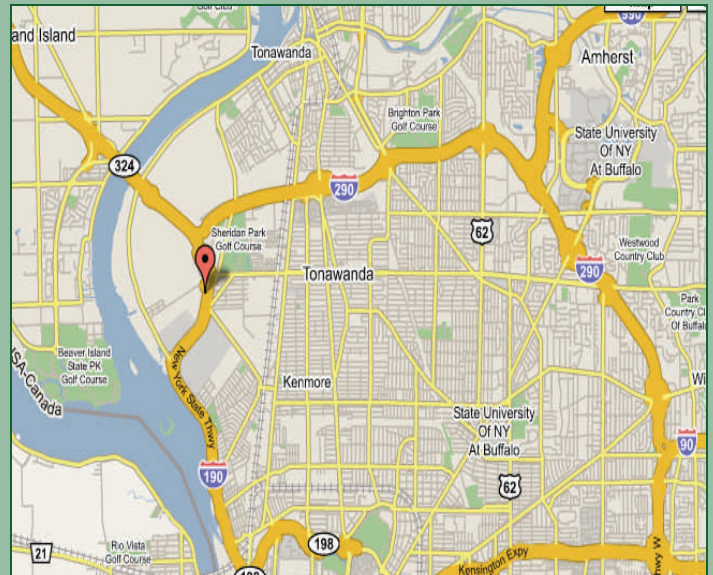
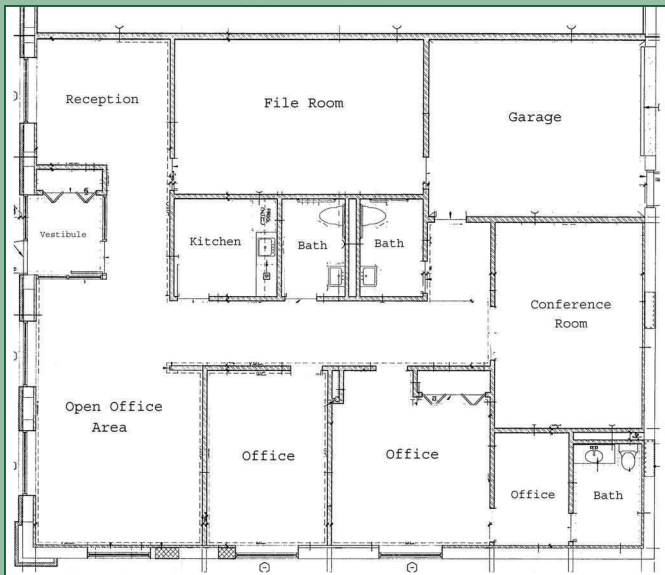
For Lease-Office

2760 Kenmore Avenue | Tonawanda | New York | 14150



Building Size:	6,300 SF
Available Space:	2,802 SF
Condition:	Move-In
Occupancy:	30 days
Asking Rent:	Below Market

A beautifully built out office in move-in condition, perfect for a small office user, including a kitchen, 2 bathrooms, a conference room, a private garage and an executive office with a private bathroom. There are 15 car parks on site. The building is located on Kenmore Avenue less than a quarter mile from the entrances to both the I-190 and the I-290 and is less than 10 minutes from downtown Buffalo and Canada.



Contact **TM Montante Development** for more information



Matthew Montante
2760 Kenmore Avenue
Buffalo, New York 14150
www.tmmontante.com

Phone: 716-876-8899
Fax: 716-876-6850
E-mail: mmontante@tmmontante.com



For Lease-Office

2760 Kenmore Avenue, | Tonawanda | New York | 14150

Floor Plan

